

36th Classic



30th October, 2022

Incorporating Wayne Cretney Memorial



Orienteering



Wairarapa



Race Report: Cloudy Mikimiki Marshes

Maps: Mikimiki Marshes 2022
1983 Black and White Riverside
1983 Cretney Colour Special Riverside
1990 No Fences Riverside
2008 Winter Classic Riverside
2018 NZSS Relays Riverside

Weather: Cloudy and Fine

Organiser and Planner: Bryan Teahan

LOST and FOUND: Blue Capital BMX Club water bottle – contact me if you want it back.

Another classic Classic. I hope you enjoyed the event. Sorry it again took me longer this year to get the report finished, as I had to binge the last 3 episodes of Doctor Who the Flux – I only had 3 hours to go before they were removed from viewing – I made it with 10 minutes to spare – anyway after 31000 steps (I broke my record for steps on my Garmin) on Saturday lugging 47 controls for 9 hours and climbing a gazillion fences (which were live!) and 22000 steps on Sunday I was in no condition to do anything except blob in front of the box.

Normally, I sleep like a log, but I couldn't sleep and stayed awake for most of the night on Sunday morning as I listened to the rain pouring down staying in a cabin of my sister and brother in law's Eketahuna camping ground and worried about what I needed to do – I didn't need to as everything was fine in the morning.

I was lucky only to get one electric shock after 10 days on the farm. Climbing fences with outriggers – sometimes during very wet and muddy conditions, sometimes with posts moving a lot, sometimes with wobbly gates being worse than the fence, sometimes carrying up to 17 controls – I felt like an acrobat juggling and gymnast balancing and having to be very very careful.

This year was a bit of a mission, as I tried to emulate Wayne and be a one-man-band - liase with farm manager, create base map, fieldwork, fieldcheck, plan, organise printing, handle entries, create and maintain website, and publicity with Wairarapa Times Age.

What did I enjoy the most? Reminiscing while mapping, lambing, mapping iconic Wairarapa farmland, and anything to do with drawing and cartography. The four old maps alongside the new one took a long time to draw and I had to experiment with the control description software (Condes and Ocad) but both didn't do exactly what I wanted so I had to use both (Condes and then export to Ocad).

This year there were a couple of firsts which require a special mention:

- A 15 year junior girl finished the Open elite course.
- An 8 year old was part of a team that came 2nd in the Rogaine.
- International entries from Ukraine – Welcome to New Zealand - I'm sure they enjoyed themselves with a bit of Kiwi hospitality and the challenge of a long distance course.

The 8 year old asked me if there was a prize/trophy for 2nd and I had to disappoint him - but I assure him that in the future there will be many prizes and trophies with his name on if he carries on.

We are all getting older and creaking around the edges and the middle and many of you were determined to finish and some with sickness / injuries - I heartily commend your endeavour and commitment - finishing a Classic is a great achievement.

Showers - what luxury! Digby as the farm manager was a pleasure to deal with and allowed me to do almost whatever I liked. We had several long talks during the wet winter – so wet that he had to use a horse to get around. He was worried (like most farmers are now) about people taking photos of some of the sad aspects of farming but I pointed out that it was to be expected on a working farm at lambing time (especially when there were a few snowstorms) and that it was a privilege for orienteers to be able to run on the farm.

This was a retro event using clip cards as the club does not have any Sportident – a bit of nostalgia from the old days with many commenting they had to remember how to use clip cards and how to clip. I was unable to record leg times as I was juggling too many tasks at once, sorry.

This year's theme ('40th anniversary') was celebrating 40 years of the Wairarapa club. I got the privilege to remap an area I first mapped in 1983 - 40 years ago - the first map I did by myself. It wasn't very good, but it was a beginning of a lifetime of a labour of love. Long may it continue. It was cool mapping and reminiscing about days gone by.

My memories of mapping for this event are:

- I missed a few weekends mapping as it was a very wet winter but because of being delayed, I got to see lots of lambs during lambing time – some being born.
- 6000 lambs and 3000 ewes
- Distressed mothers and lambs worried about the big bad human predator (me) – some lambs mistaking me for their mother
- Temperature below zero driving over the Rimutaka Hill a few times at dawn
- The water in the water troughs frozen
- The Tararuas and foothills covered in snow
- Face planting on a slippery slope and my map board being covered in mud (thankfully waterproof and only required a bit of a wash with water)

- Overly friendly cows and sheep – during the wet wet wet winter they were being fed by the farmers every day and when they saw me, they would come racing up to me – this was a first for me for sheep.
- Being covered in mud many times after mapping up to 9 hours and my feet being wizened and wrinkly.

The local area is named Mikimiki (after the native bush) - I decided to have a different name after all previous maps had Riverside in the name. The other parts from previous maps I named 'Shades of Yesterday' – I wanted to give everyone a taste of what it was like to run on maps in the early years and I think the unique opportunity added spice to the courses.

It also provided extra challenge when determining the routes for the Rogaine course as the controls on the part old maps weren't shown on the large new map.



Past and Current Club members at the Cake cutting:

Standing: Ray Nicholson, Paul Dalton, Conrad McCaffrey, Graeme Roberts, Gail Edwards, Bryan Teahan

Sitting: Graham Teahan, Jim Barr, Barbara Barr, Liz Nicholson, Margaret McLauchlan
Notice that Graeme and Jim are wearing the iconic club O suit.

As in previous years, it is almost a superstition or a good omen for me that the event will turn out well as long as I suffer some pain just before the event – in past years it was bruising, toothache, the flu, tooth extraction, vaccine jabs, bad knees. It might be hard to top this year – I got the dreaded big C (Covid) and had to isolate for 7 days

several weeks before the event. Really though, compared to previous years it was actually the least painful.

And my two sore and painful knees are not getting better and after walking about 50km over a few days (I also put out some controls on Friday night until dusk) I was a walking zombie from Sunday to Tuesday – walking stooped over and looking like a decrepit old geriatric – I'm sure some of my workmates saw me nodding off. Thankfully on Monday there were network issues at work so I couldn't do much work – just perform the all-important task of drawing out some horses for the Melbourne Cup work sweepstake.

I consider not just the day seized but the whole 3 days seized.

(Roman poet Horace Odes: 'carpe diem' means seize the day)



*Calvin and Hobbes cartoon: One of my favourite sayings:
'Tomorrow, we'll seize the day and throttle it!'*

Thanks to Margaret for a fabulous cake, helping with the results and finance, and Liz and Graham for picking up some of the controls during the week. I was only able to pick up 60% of controls on the Sunday because I did not have enough daylight (and I was dead tired) and everyone else was bugged (a sign of a good Classic). It was physically impossible for one person to pick up all controls, but I gave it a good crack. Thanks to Gail and Graeme for cleaning the kitchen, toilets and showers and putting up birthday streamers and balloons.



3 original club members from 40 years ago – Graham, Margaret and me.

We were unable to have hand-made curry-puff pastries this year as my wife is in Thailand looking after her sick sister.

Sorry about the pizzas and for those that missed out. As the pizzas were being picked up, the Dominoes staff were asked – ‘Is that the lot?’ and were assured that it was. Unfortunately, only 14 boxes were picked up and 26 were left behind. Only bonus was I got 5 boxes and a few free dinners/lunches. Needless to say, Dominoes will get a 1-star review. I’m now sick of pizzas for a while.

I’m not really trying to hide the controls – really! It was very windy on the Saturday and I had to place some controls behind bushes and reeds to stop from being blown away. There were also many frisky and friendly cattle I was worried would demolish the flags (as happened in previous Classics) so I placed some in the middle of rocky areas.

One person quipped to me that the climb was a Wayne Cretney calculation – the contours for the new map were from accurate Lidar and I was choosing the optimum route – many times Wairarapa hills are huge and even bigger when coming at the end of a long course.

And now onward for me, I am really looking forward in a week’s time to a well-deserved holiday in Thailand to see my wife and her family (after a long time being apart) along with my son and his girlfriend.

Results

<http://www.winterclassic.co.nz/wc/results2022.htm>

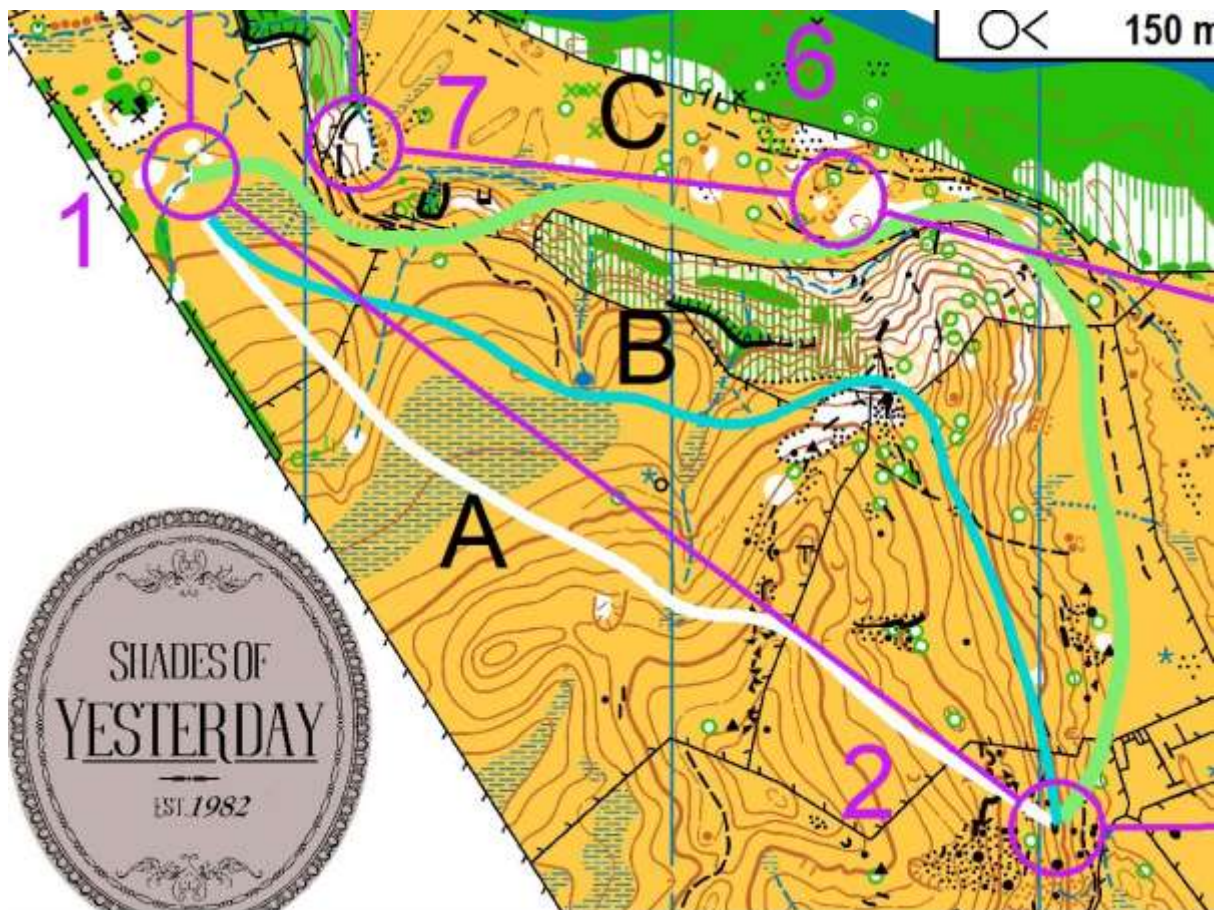
Memorial Booklet

<http://www.winterclassic.co.nz/wc/40th%20v4.pdf>

Route Choices

Did you choose the right Route Choice?

Here are some of the intended route choices. Not so many routes this year as much of the area was flat and going straight was the best option. I could have made a long route choice in the rolling farmland but fences would have made the navigation easier and I opted to include several medium sized route choices instead. In hindsight I could have saved a half hour putting out controls and two people questioned me on why I didn't have a long leg – thanks for keeping me up to scratch! There was a long leg on the D map for the classic Elite course.

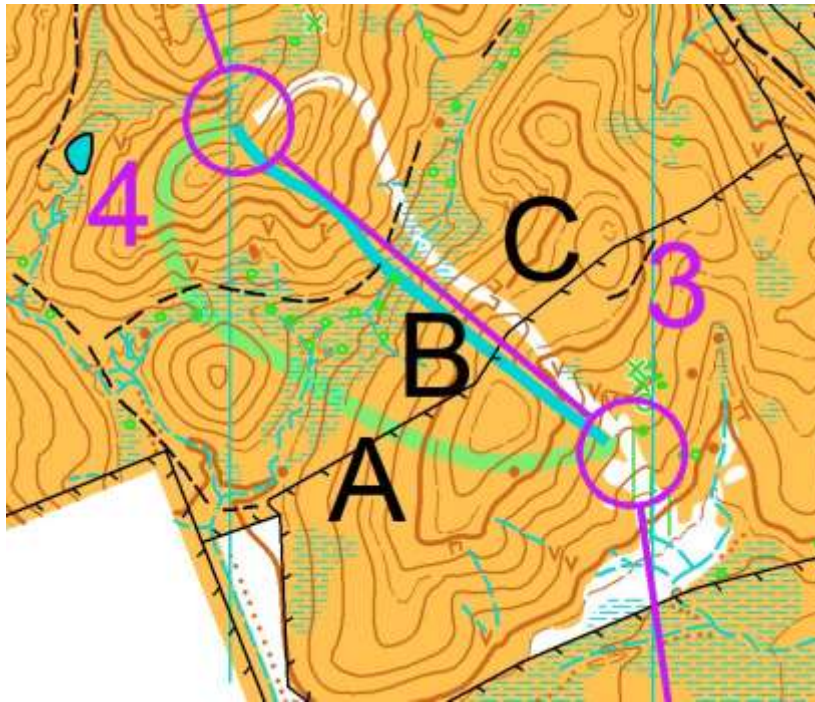


A: 870m, 55m climb

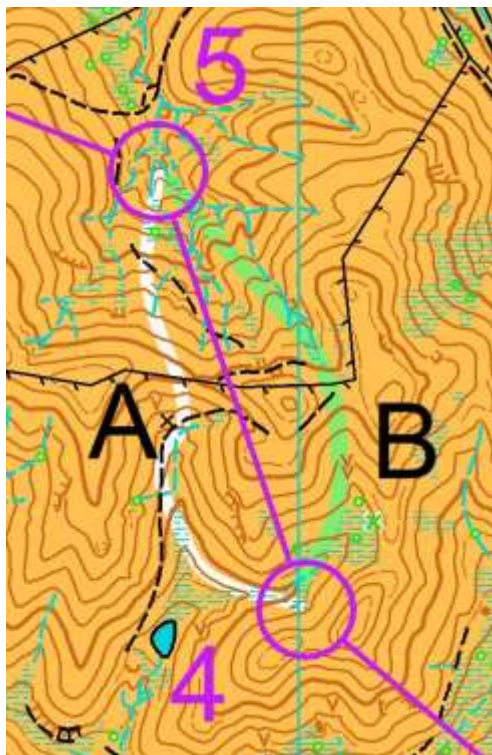
B: 995m, 30m climb

C: 1227m, 25m climb

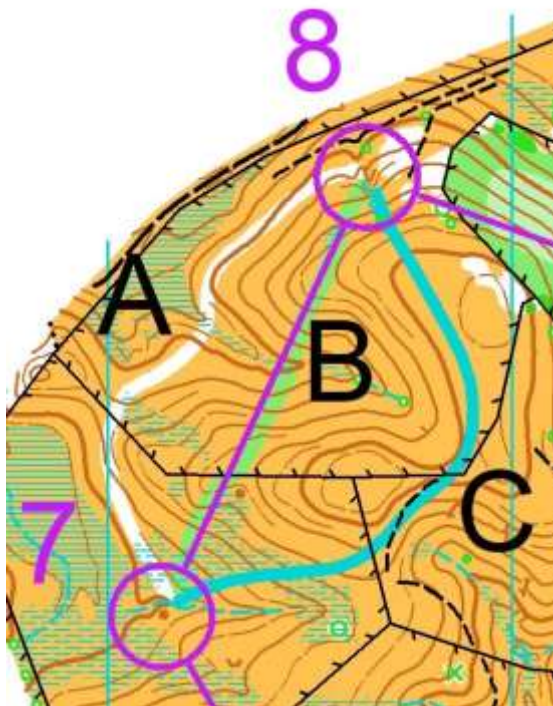
Planner's Pick: B



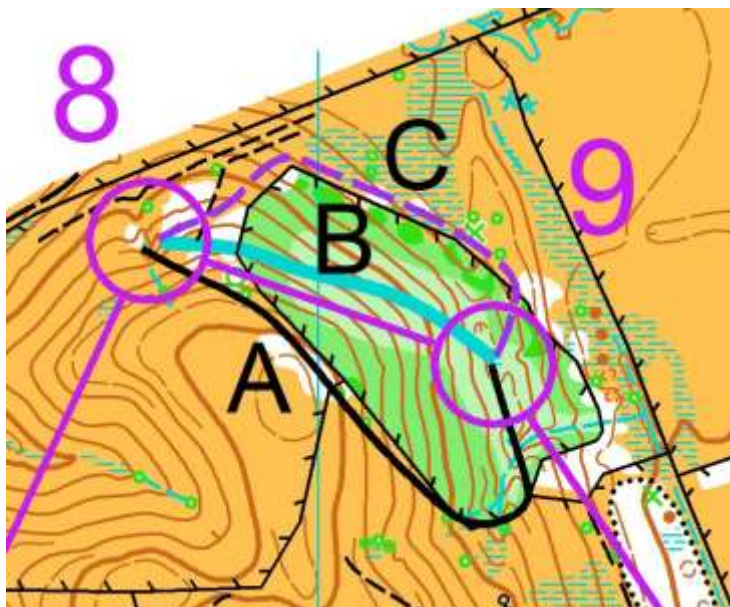
A: 480m, 45m climb
 B: 350m, 50m climb
 C: 395m, 45m climb
 Planner's Pick: B



A: 421m, 25m climb
 B: 386m, 25m climb
 Planner's Pick: B



A: 423m, 15m climb
 B: 344m, 30m climb
 C: 467m, 15m climb
 Planner's Pick: A



A: 407m, 20m climb
 B: 229m, 5m climb
 C: 315m, 10m climb
 Planner's Pick: B

Feedback:

Liz Nicholson (winner of Veteran Women and involved with all 36 classics – a legend!)

Thank you for all the work you put in for the map and event. I enjoyed my course and found it nice and challenging right to the end.

All the best for your trip to Thailand.

Graham Teahan:

No doubt you will be a bit sore and tired today. Thanks for a great event. It's a pity I could not do justice to the hills.

Orienteering Wellington Newsletter:

Thanks to the Wairarapa Club, who invited us to their 40th Birthday, doubling up with the 2022 edition of the Classic.

Bryan Teahan treated us to challenging, Classic-style courses on a completely overhauled map, and took the longer (and red) courses through loops of the old maps of the area, from the original black and white forwards. Results will be on the Classic website and almost certainly emailed to participants. Bryan also often does a digest of the courses which is well-worth reading through. <http://winterclassic.co.nz/wc/index.php>

Orienteering NZ: Compass Point – October 2022:

Club feature: Orienteering Wairarapa

Orienteering Wairarapa have created a massive comprehensive club feature as a celebration of 40 years for their club. To lead into the document we have pulled out a few club details, but our few questions for each club were considered too 'mundane' for them. The competition is now on for the most comprehensive club profile, and Orienteering Wairarapa have created a time capsule document full of maps and historic club detail. What a read! We are wishing Orienteering Wairarapa the best birthday bash event, can't wait to hear about their 40th celebration event on 30 October 2022.

<https://www.orienteeing.org.nz/news/orienteering-wairarapa-celebrates-40-years/>

Further Information:

Mikimiki Valley Walk

<https://www.ttc.org.nz/pmwiki/pmwiki.php/TararuaFootprints/MikimikiValley>

Tararua Tramping Club

Mikimiki Shrub

<https://www.inaturalist.org/taxa/401012-Coprosma-crassifolia>



River Flow at Mikimiki Bridge

<http://graphs.gw.govt.nz/?siteName=Waipoua%20River%20at%20Mikimiki%20Bridge&dataSource=Flow>

<https://www.lawa.org.nz/explore-data/wellington-region/water-quantity/monitoring-sites/waipoua-river-at-mikimiki-bridge/>

The Waipoua River flows from the foothills of the Tararua Ranges in a south-easterly direction, before it discharges into the upper Ruāmahanga River south of Masterton.

Massey University Riverside Farm, Pāmu Riverside

<https://www.massey.ac.nz/about/massey-subsidiaries-and-commercial-ventures/massey-farms/riverside-farm/>



Riverside Farm is a leased sheep and beef property near Masterton in the Wairarapa made up of one large block and a smaller one nearby.

Objectives

- To expand knowledge about pastoral sheep and beef farming in summer-dry areas, particularly Wairarapa.
- To provide a facility for quality research, teaching and extension in sheep and beef farming.
- To be managed as a profitable commercial sheep and beef farm.
- To provide a link between the University and Agribusiness.

About the farm

Riverside Farm is owned by the Sydney Campbell Foundation. Massey has leased the land since 1978 based on a 99-year term (with right of renewal).

The farm consists of two blocks, the main unit (650 ha) and the smaller and less developed Mikimiki block (75 ha).

The property is subdivided into 105 paddocks and 5 holding paddocks. Fences are about 50% conventional and the rest 3- or 4-wire electric.

Wool-less Sheep

I did see a wool-less sheep - I thought that a shearer had forgotten to finish off shearing it!



It is hoped a multi-year study on a research farm near Masterton will give farmers a better understanding of the benefits and costs of shifting to a wool-less flock.

<https://www.rnz.co.nz/news/country/444061/farmers-flock-to-see-wiltshire-wool-less-sheep-benefits>

Map Cartoons:



CS171107

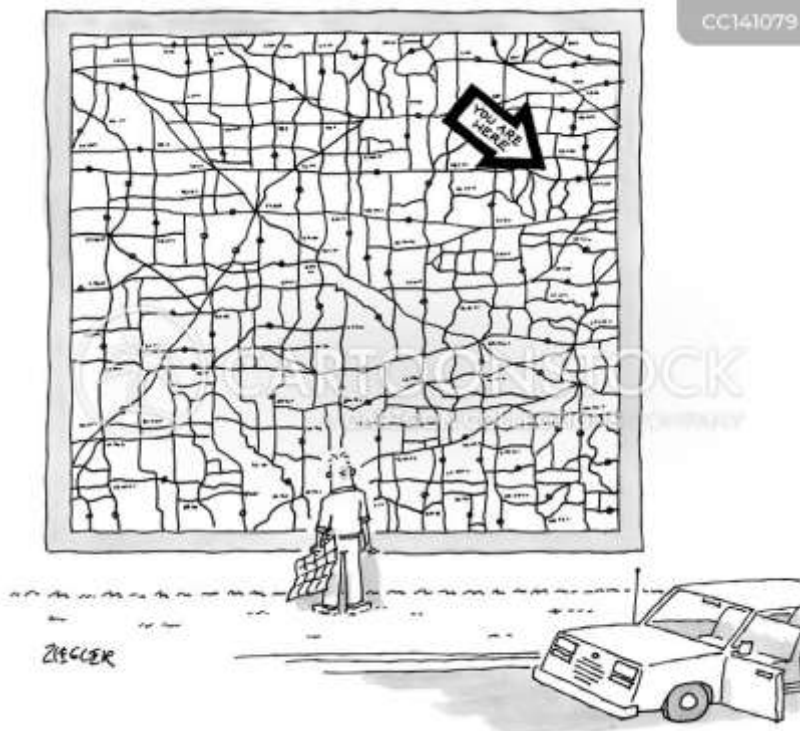


Val and les could see a fork in the road
but they weren't expecting a dip

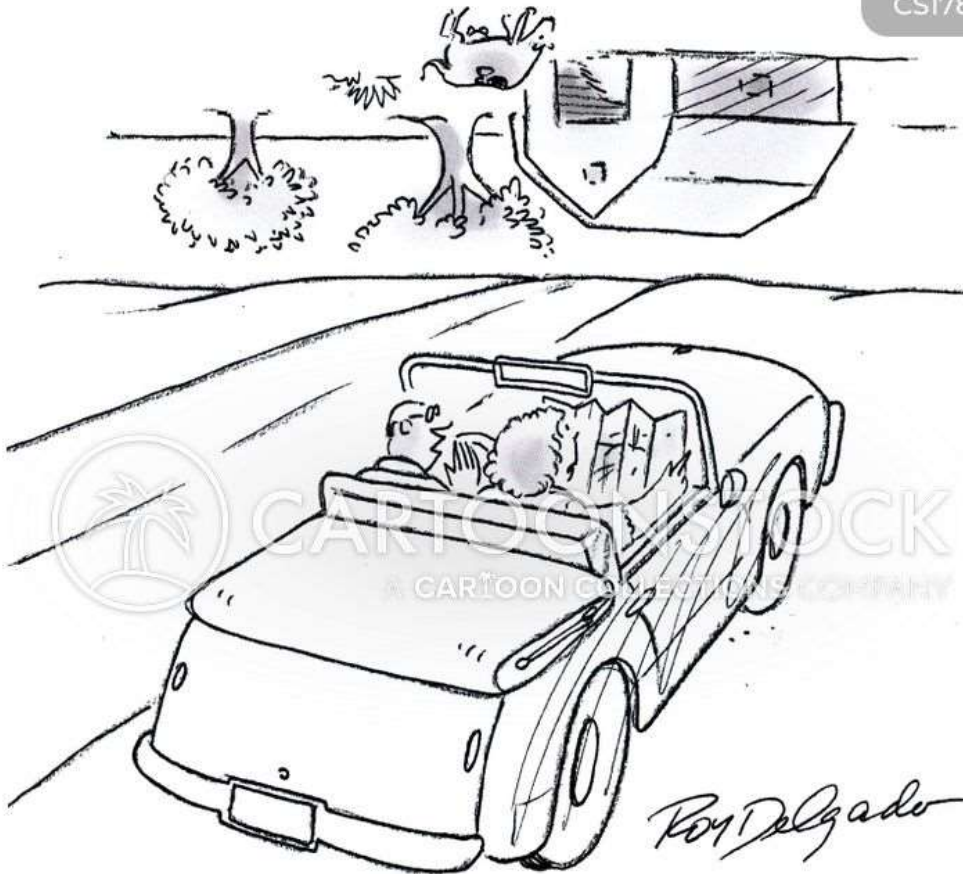
CS517716



CC141079



CS178694



" Let me look at that map . . . "



"Alright then, I'll admit it... we might be lost!"

CS403287



"I think we took a wrong turn."

EXCESS BAGGAGE

by Paul Fell

BY THE TIME
THE MALE OF
THE SPECIES
ADMITS HE IS
LOST, IT IS
GENERALLY
TOO LATE.

